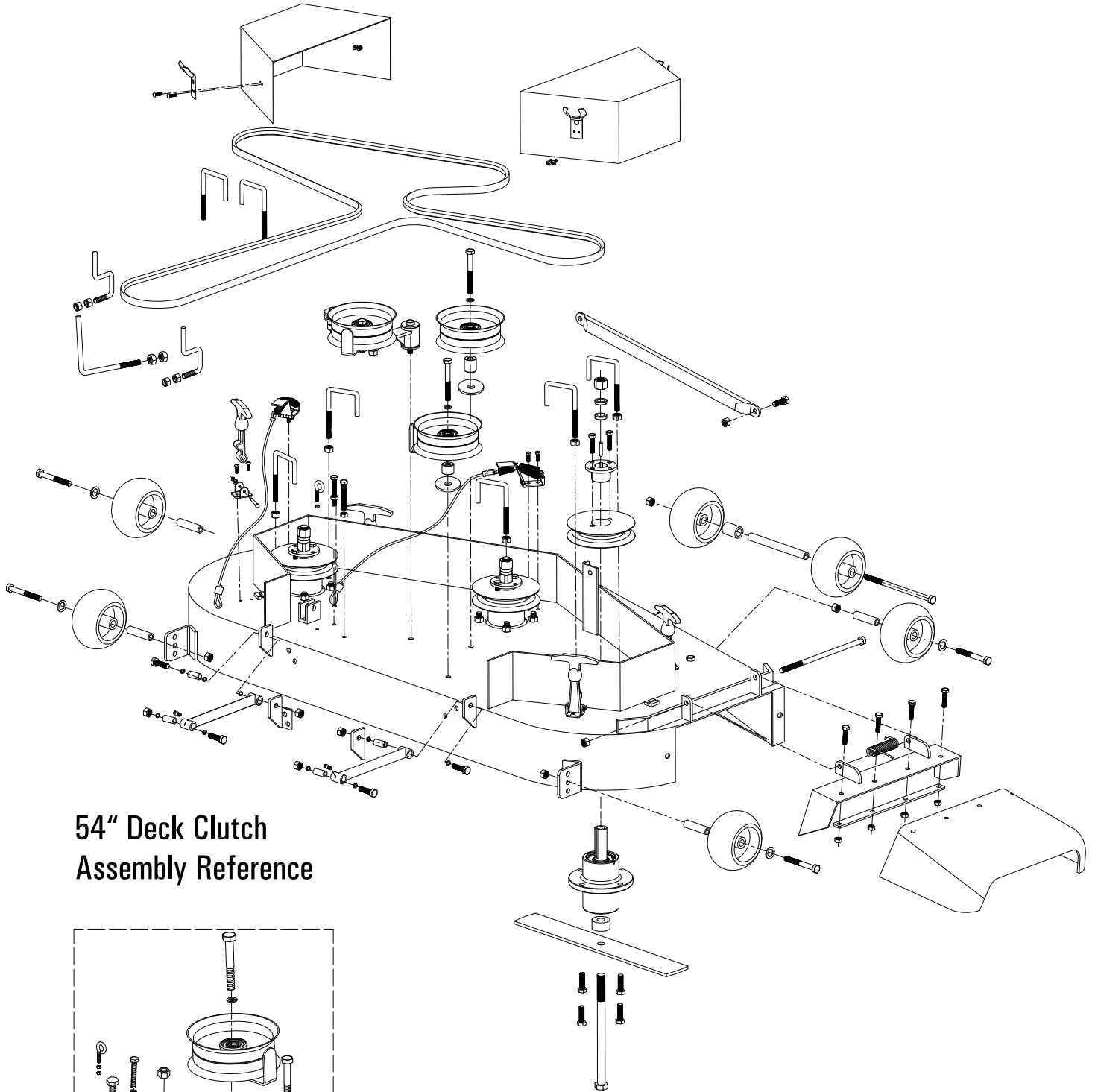


54ZB

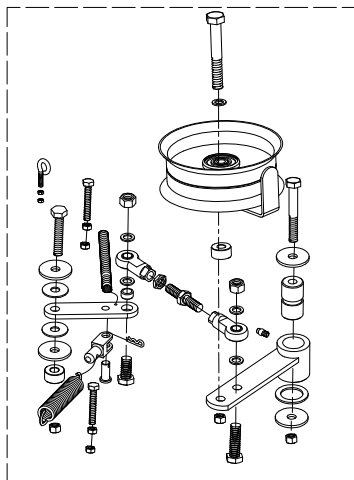
54" BEAST Zero Turn Riding Mower

22hp EH65V Robin Subaru

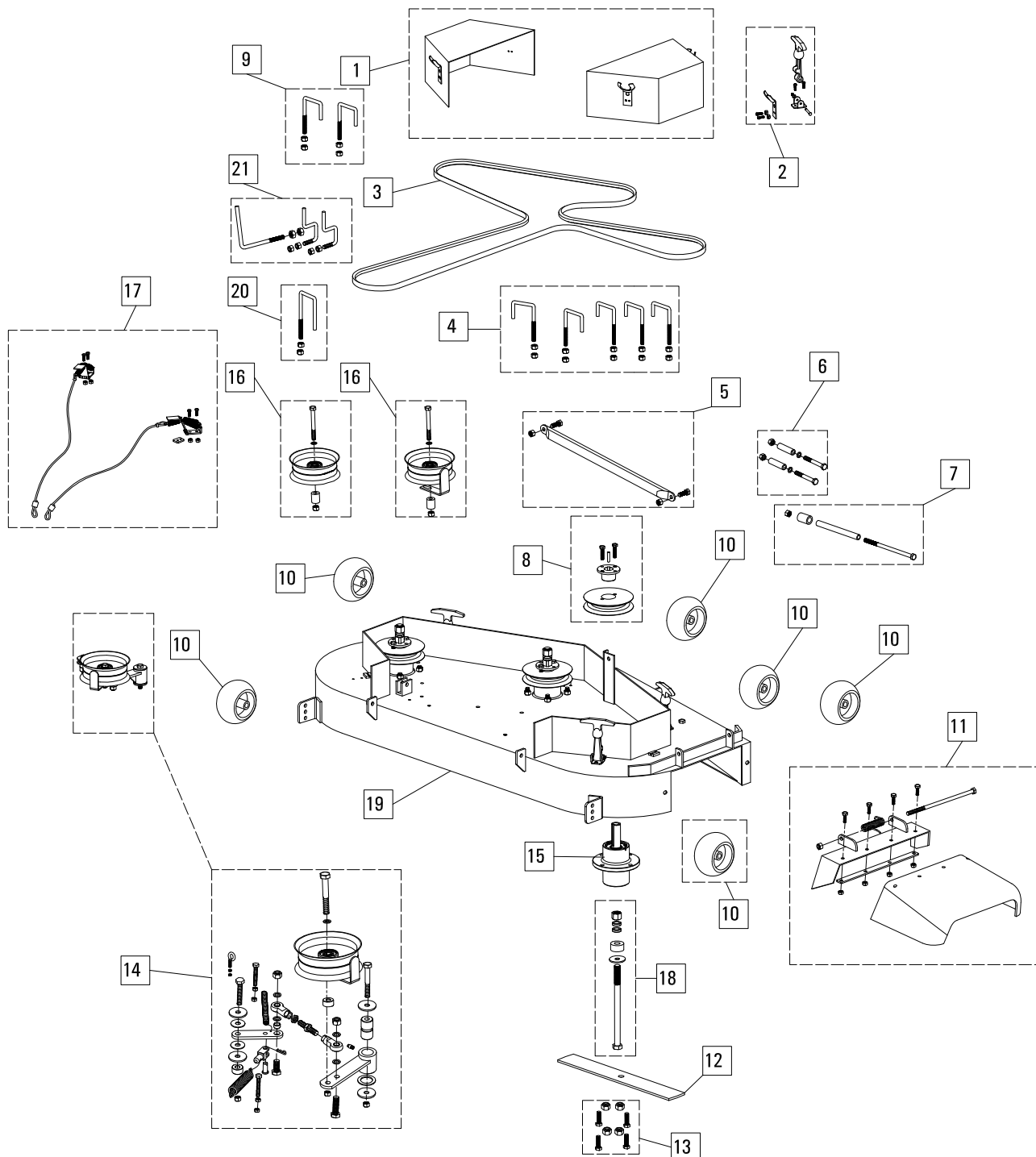
54" Deck Parts Assembly Reference



54" Deck Clutch Assembly Reference



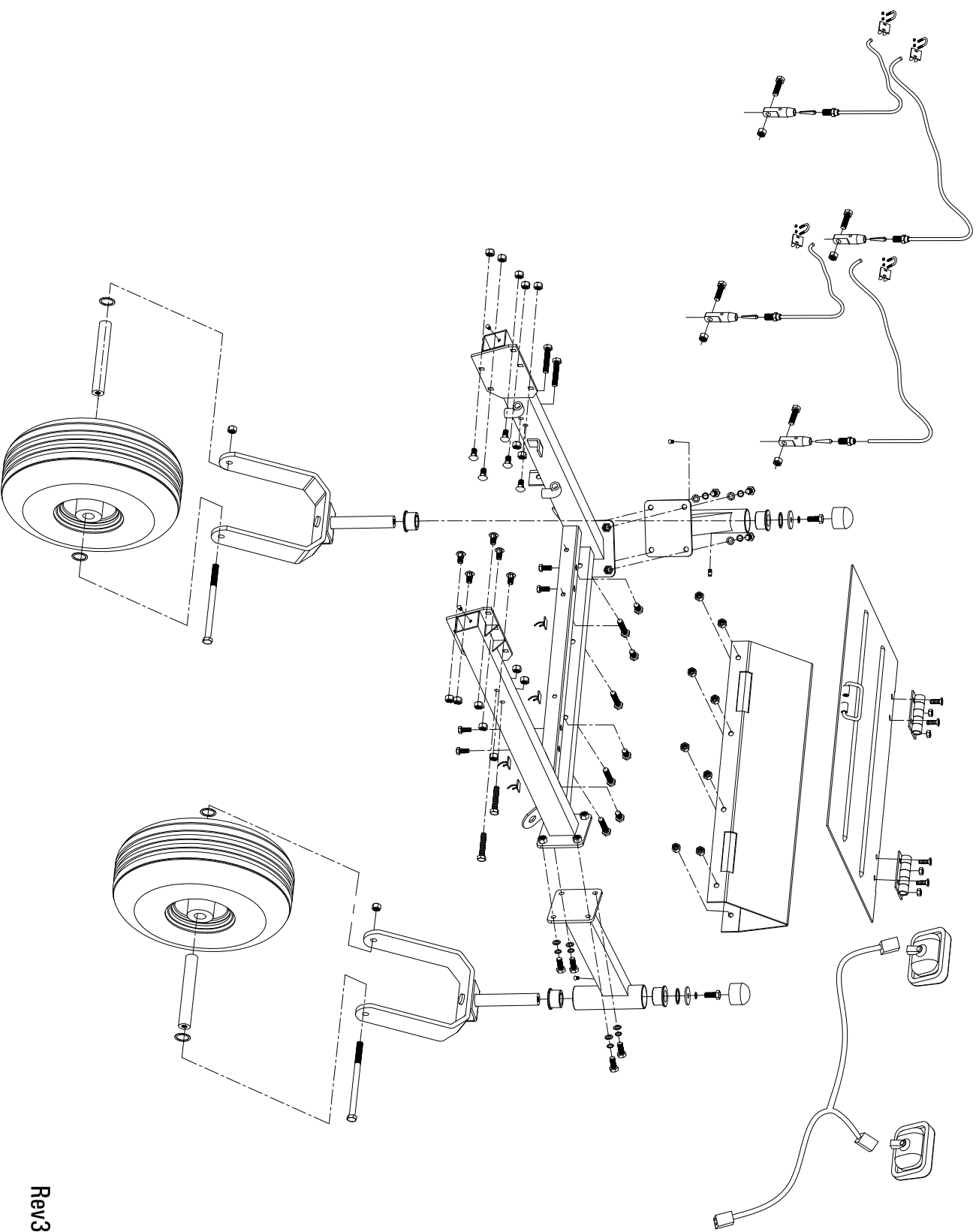
54" Deck Parts Diagram



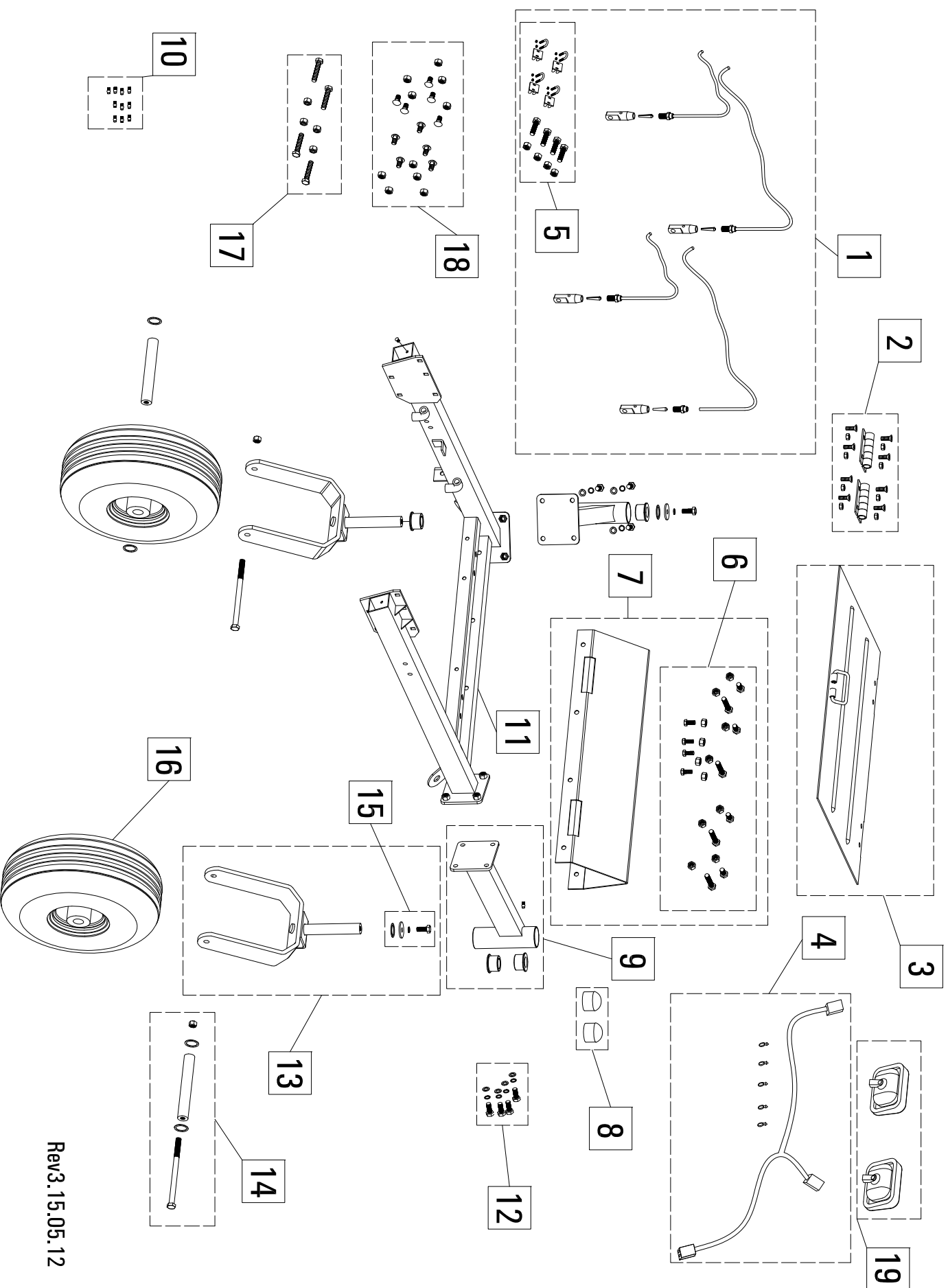
54ZB" Deck Parts Diagram Key

| Item # | Gxi Part Number | Description |
|--------|-----------------|---|
| 1 | SP11-000062 | Belt guard, 54ZB, set of 2 with rubber T-handle receivers |
| 2 | SP12-000229 | Rubber T-handle, 54Z, 62Z, 36B for guard fastening, with receiver and hardware |
| 3 | M10-000466 | 54" Engine to blade belt - MXV5-1520.. |
| 4 | SP11-000009 | Belt retainer kit, Z, belt retainers and hardware |
| 5 | SP12-000230 | Stabilizer assembly, front, , black, with hardware.. |
| 6 | SP11-000087 | Hardware kit, scalping wheel, set of 2 bolts, washers, locking nuts, and bushings..... |
| 7 | SP12-000231 | Hardware kit, double scalping wheel, center set, bolt, washer, locking nut, and bushing |
| 8 | SP12-000232 | Pulley, 54Z, 54F, deck pulley and taper lock bushing and hardware |
| 9 | SP12-000186 | Belt retainer kit, Z, intermediate between engine and deck, 2 belt retainers and hardware |
| 10 | M10-000458 | Scalping wheel, 5" plastic.. |
| 11 | SP11-000056 | commercial mower discharge chutes with bolt and spring |
| 12 | SP12-000233 | Blade, set of 3, 54Z, 54F |
| 13 | SP11-000086 | Hardware kit, Z, W, spindle fastening, set of 4 bolts and nyloc nuts |
| 14 | SP11-000059 | Clutch assembly, commercial Z, W,complete clutch mechanism with all hardware and springs... |
| 15 | M10-000928 | Cast Steel Spindle Assembly |
| 16 | SP11-000085 | Idle pulley, 5", includes bolt, locking nut, belt retainer, spacer, and reinforcement washer for necessary applications |
| 17 | SP11-000041 | Spindle brake kit, 54Z, left and center brakes, springs, cables, hardware.. |
| 18 | SP12-000234 | Hardware kit, commercial Z, W blade bolt, washer, spacers, and nut |
| 19 | M10-000312 | 54" ZTR Commercial Deck - orange.. |
| 20 | SP11-000017 | Belt retainer, commercial Z, 54F clutch to first spindle |
| 21 | SP12-000185 | Belt retainer kit, Z, engine pulley, rear retainer, 2 side retainers with hardware |

54" Frame Diagram-Assembly Reference



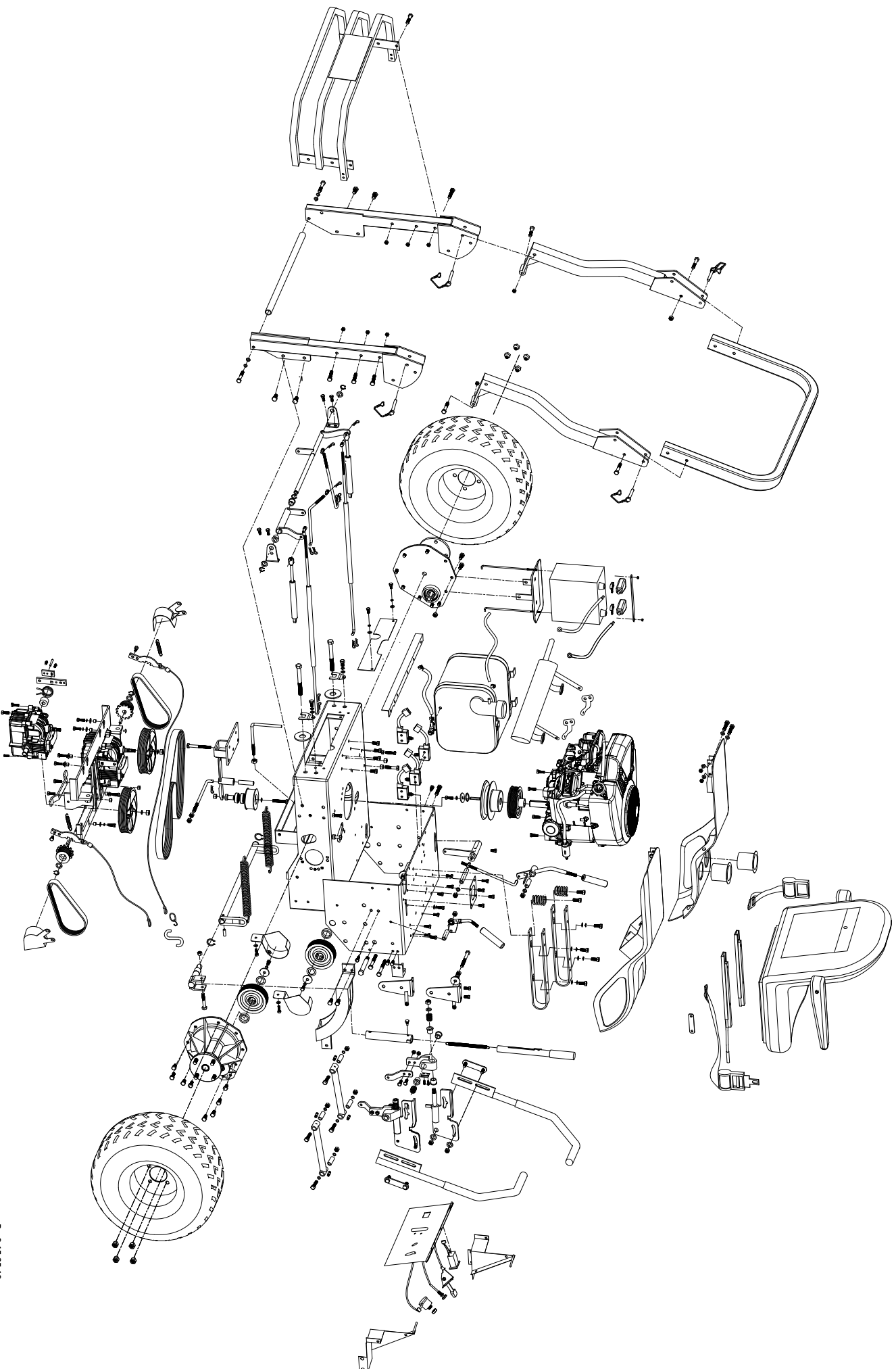
54" Frame Parts Diagram



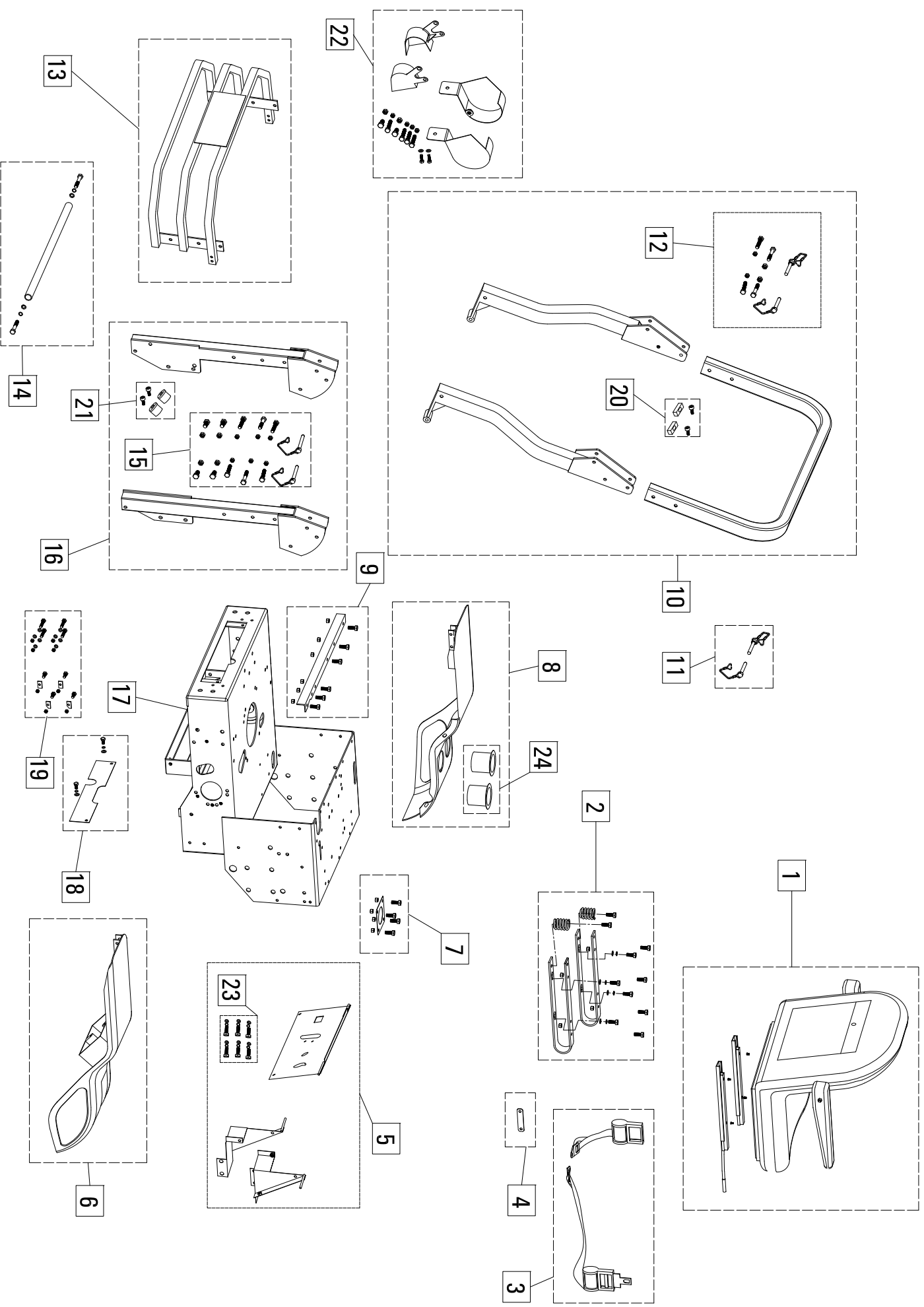
54ZB" Frame Parts Diagram Key

| Item # | Gxi Part Number | Description |
|--------|-----------------|---|
| 1 | SP11-000016 | Deck cable kit, commercial Z, all 4 subassembled cables, includes cable clamps |
| 2 | SP12-000235 | Hinge, floorboard, commercial Z, with hardware |
| 3 | SP11-000030 | Floorboard, commercial ZB, grey, with grip tape |
| 4 | SP12-000208 | head light wire harness and wire harness line clips |
| 5 | SP12-000236 | Hardware kit, commercial Z, deck cable connections, 4 nuts and bolts, and cable clamps |
| 6 | SP12-000237 | Hardware kit, commercial Z, floorboard mounting hardware |
| 7 | SP12-000238 | Floorboard, front V, commercial ZB, grey with grip tape |
| 8 | SP11-000137 | Bearing cap set, Z, black plastic, set of 2 front wheel bearing cap.. |
| 9 | SP12-000239 | Front wheel mount, commercial ZB, orange, with brass bushings, grease fittings |
| 10 | SP12-000189 | Grease fittings, set of 10 |
| 11 | M10-000861 | Frame, front, 54ZB, orange |
| 12 | SP12-000240 | Hardware kit, front wheel mount mounting bolts with washers and lock washers |
| 13 | SP12-000241 | Front wheel yoke, commercial ZB, orange, with assembly hardware to frame, axle NOT included |
| 14 | SP11-000018 | Hardware kit, commercial Z, front wheel axle bolt and axle hardware.. |
| 15 | SP11-000140 | Hardware kit, Z, W, retaining hardware for front wheel caster, includes, bolt, fender washer, and lock washer.. |
| 16 | SP11-000034 | Tire assembly, commercial Z, front tire mounted to rim, with bearings pressed into rim hub, ribbed 15" x 6" x 6" tire |
| 17 | SP11-000139 | Hardware kit, Z, fasten frame to control panel end caps, and attach deck height set bracket to right hand side of frame.. |
| 18 | SP11-000141 | Hardware kit, Z, frame to chassis mounting hardware, contains 10 custom carriage bolts and locking nuts.. |
| 19 | SP12-000209 | Headlight bezel, lense, and bulb assembly, set of 2 |

54" ZB Chassis Diagram-Assembly Reference



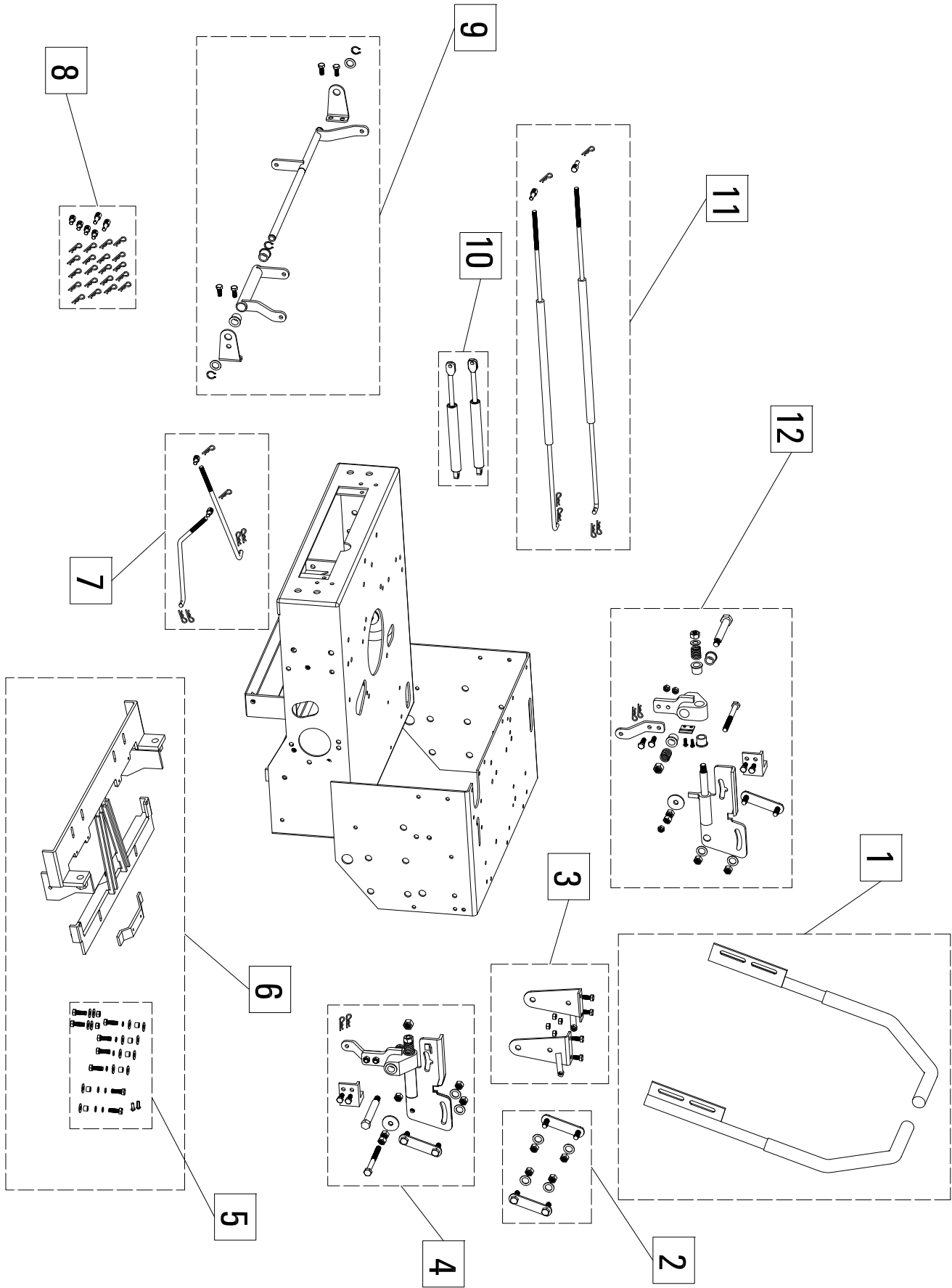
54"ZB Chassis Diagram-Chassis Components Diagram



54ZB" Chassis Diagram -Chassis Components Diagram Key

| Item # | Gxi Part Number | Description |
|---------------|------------------------|---|
| 1 | SP18-000499 | Commercial seat - BEAST.. with safety swith assembly. and Wire - Commerical mower new seat |
| 2 | SP11-000090 | Seat U mount assembly with suspension springs and hardware |
| 3 | M10-000538 | Seat belt, Z, retractable |
| 4 | M10-000373 | Seat belt Strap - Commercial |
| 5 | SP12-000218 | Control panel assembly, 54ZB, orange and grey, include hardware and label |
| 6 | SP12-000219 | Fender assembly, 54ZB, 62ZB, gray, right hand side, with label |
| 7 | SP11-000095 | Panel assembly, fuel tank neck cover, ZB, orange, with hardware |
| 8 | SP12-000220 | Fender assembly, 54ZB, 62ZB, gray, left hand side, with label, and 2 cup holders. |
| 9 | SP11-000096 | Reinforcement support, seat bracket, Z, black, with hardware |
| 10 | SP12-000221 | Roll bar assembly, 54Z, 62Z, left and right middle sections, upper section, hardware, pins, and labels.... |
| 11 | SP11-000028 | Roll bar pin kit, Z, contains 2 |
| 12 | SP12-000222 | Hardware kit, roll bar, 54Z, 62Z, hardware for middle and upper section roll bar attachment, includes 2 roll bar pins.. |
| 13 | SP12-000223 | Rear engine guard assembly, 54ZB, 62ZB, grey, with label |
| 14 | SP11-000031 | Guard, rear hydro guard with hardware.... |
| 15 | SP12-000224 | Hardware kit, roll bar, commercial Z, hardware for lower and middle section roll bar attachment |
| 16 | SP12-000225 | Roll bar assembly, 54/62Z, left and right lower sections, hardware |
| 17 | M10-000923 | Commercial ZTR Chassis - Orange.. |
| 18 | SP11-000101 | Rear access cover, chassis, ZB, orange, with hardware and labels.. |
| 19 | SP11-000102 | Hardware kit, fender mounting hardware.. |
| 20 | SP11-000103 | Roll bar silencers, commercial Z, upper, with hardware, use Loctite during assembly (Loctite not included) |
| 21 | SP12-000226 | Roll bar silencers, commercial Z, lower, with hardware, use Loctite during assembly (Loctite not included) |
| 22 | SP12-000159 | Hydro/Final drive pulley covers, commercial Z, black, with hardware |
| 23 | SP12-000202 | Hardware kit, for panel assembly SP12-000198 and SP12-000218 |
| 24 | SP12-000182 | Cup holders, Z, black plastic, contains 2 - glue into fender (glue not included) |

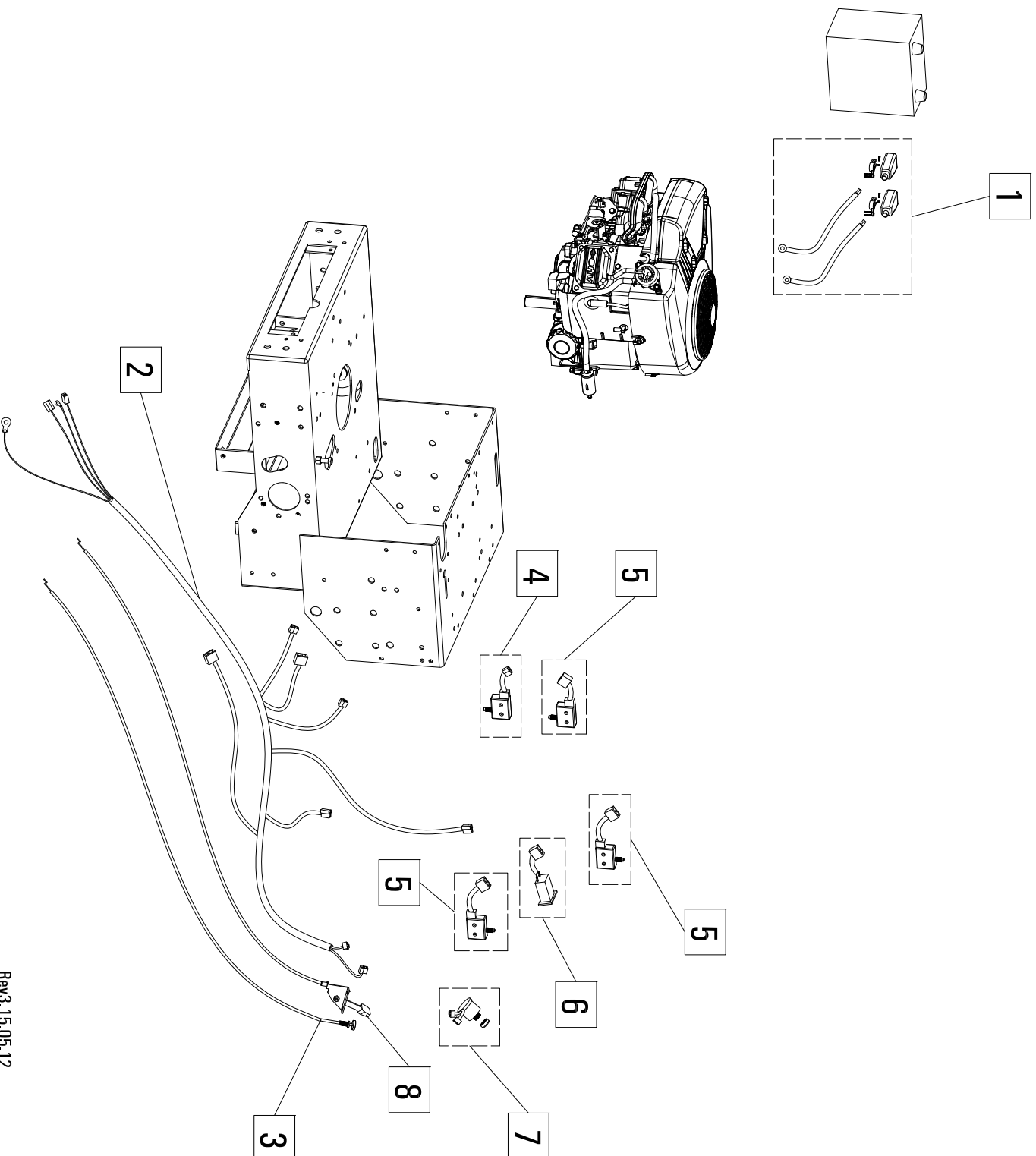
54"ZB Chassis Diagram-Hydrostatic Drive Controls



54ZB" Chassis Diagram -Hydrostatic Drive Controls Key

| Item # | Gxi Part Number | Description |
|--------|-----------------|---|
| 1 | SP11-000019 | Control handle assembly, Z, right and left control handles, black, textured vinyl coated |
| 2 | SP11-000117 | Control handle retainer assembly, Z, set of 2 control handle retainers and hardware.. |
| 3 | SP12-000203 | Reinforcement kit, 48ZS, 54Z, 62Z, inner controls hanger set with hardware.. |
| 4 | SP11-000013 | Control pivot assembly, Z, right hand side, includes all hardware, visible return to neutral block, and control handle retainer assembly |
| 5 | SP11-000119 | Hardware kit, Z, W, hydro carrier to chassis fastening hardware.. |
| 6 | SP11-000120 | Hydro carrier kit, Z, includes center reinforcement, and hydro carrier to chassis fastening hardware... |
| 7 | SP11-000121 | Rod kit, hydro control, Z, left and right rods, threaded rod ends, and cotter pins.. |
| 8 | SP11-000122 | hardware kit, Z, W, 2 long shaft threaded rod ends, 4 standard threaded rod ends, 20 cotter pins.. |
| 9 | SP11-000027 | Rear control assembly, Z, rear hydro control pivot assembly with mounting hardware.. |
| 10 | SP11-000123 | Damper kit, Zm 2 control system dampers included.. |
| 11 | SP11-000124 | Rod kit, Z, intermediate control between handle and rear control assembly, includes long shaft threaded rod ends, and pins.. |
| 12 | SP11-000012 | Control pivot assembly, Z, left hand side, includes all hardware, visible return to neutral block, and control handle retainer assembly.. |

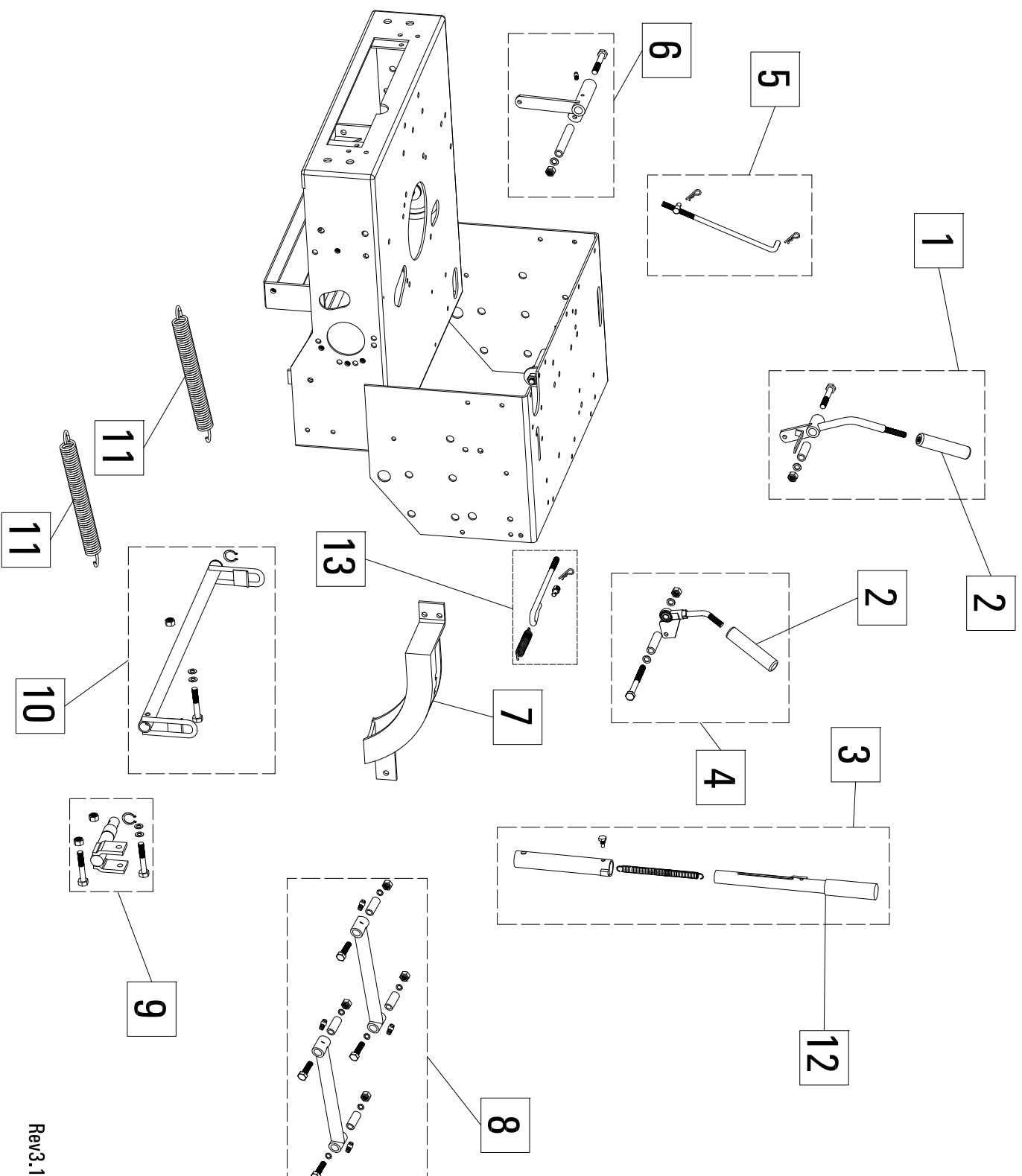
54" ZB Chassis Diagram-Engine Mechanical/Electrical Controls



54ZB" Chassis Diagram -Engine Mechanical/Electrical Controls Key

| Item # | Gxi Part Number | Description |
|---------------|------------------------|--|
| 1 | SP12-000228 | Battery cable set, 54ZB/62Z, includes terminals, terminal covers, positive and ground battery cables |
| 2 | M10-000524 | Commercial mower wiring harness, Subaru.. |
| 3 | M10-000877 | Choke cable, commercial Z |
| 4 | M10-000543 | Switch, blade drive interlock, Z, W, NC, with pigtail and male plastic plug |
| 5 | M10-000544 | Switch, blade drive interlock, Z, W, NO, with pigtail and female plastic plug |
| 6 | M10-000541 | Hour meter, Z, W, with soldered pigtails and female plastic plug |
| 7 | M10-000539 | Switch, 3 position, Z, W, with keys, 3 pin and 2 pin female plastic plug |
| 8 | M10-000876 | Throttle cable, commercial Z |

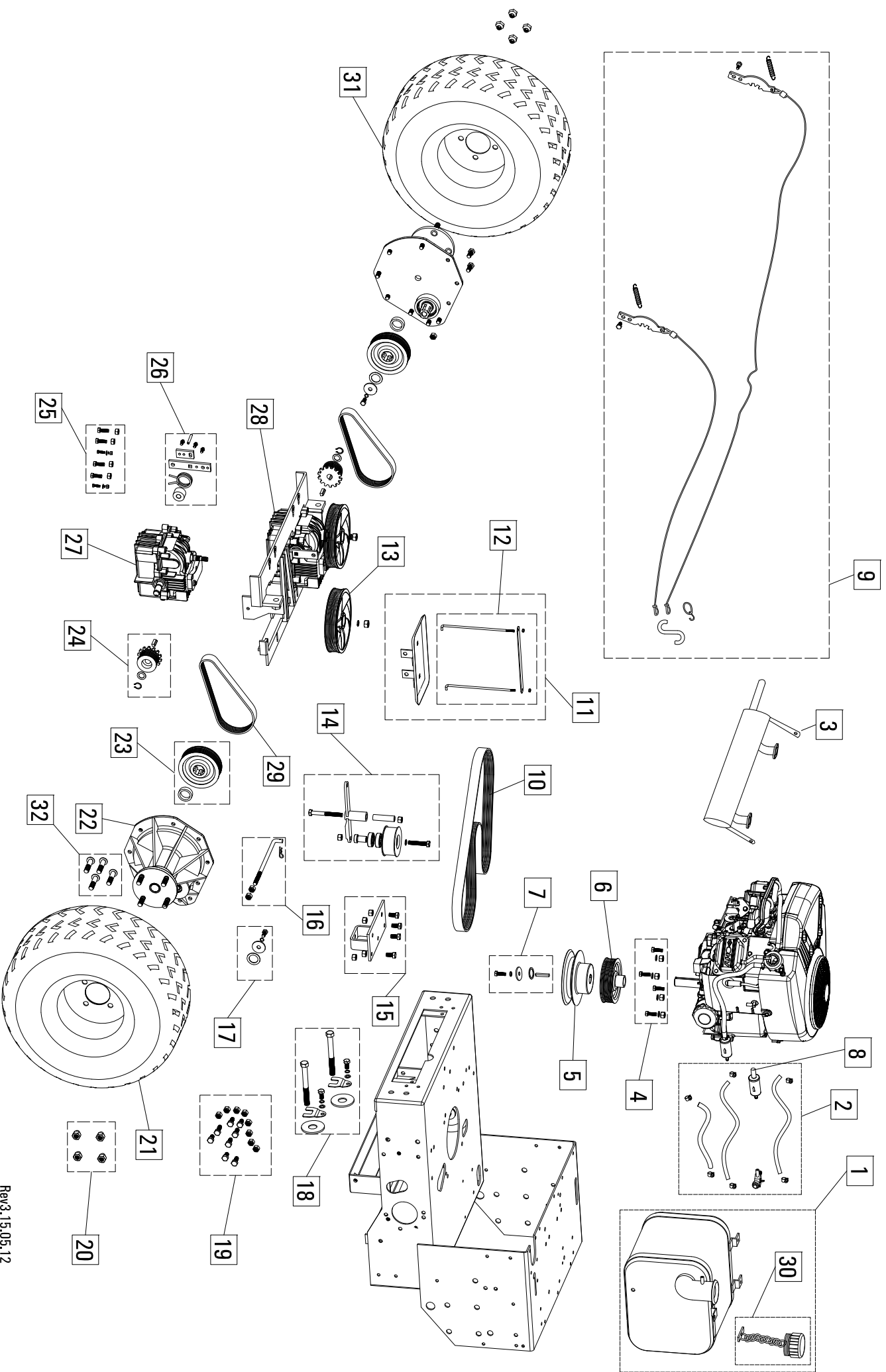
54" ZB Chassis Diagram-Blade, Brake, Deck Lift Handle Systems



54ZB" Chassis Diagram -Blade , Deck Lift Handle Systems Key

| Item # | Gxi Part Number | Description |
|---------------|------------------------|---|
| 1 | SP11-000008 | Handle assembly, blade on/off, Z, includes pivot bushing, vinyl handle grip, and mounting hardware.... |
| 2 | M10-000023 | Handle grip, vinyl coated, Z, vinyl coated steel, blade and brake handle grip.. |
| 3 | SP11-000014 | Handle assembly, deck lift, Z, includes upper handle, lower handle, return spring, guide bolt, and vinyl grip |
| 4 | SP11-000010 | Handle assembly, park brake, Z, includes pivot bushing, vinyl handle grip, and mounting hardware.. |
| 5 | SP11-000125 | Rod kit, intermediate deck engagement, Z, includes threaded rod end and cotter pins.. |
| 6 | SP11-000007 | Pivot kit, blade engagement, Z, pivot assembly between deck handle and deck clutch, includes pivot bushing and hardware.. |
| 7 | SP11-000126 | Deck height set bracket, ZB, orange, with height label.. |
| 8 | SP12-000227 | Stabilizer assembly, rear,54Z/62Z, black, left and right stabilizers,with bushing, grease fittings, and hardware.. |
| 9 | SP11-000128 | Mount, deck lift handle, Z, with bolt and locking nut |
| 10 | SP11-000129 | Deck height pivot bar, Z, with bolt and locking nut |
| 11 | M10-000356 | Spring, Z, deck height lift assist spring |
| 12 | M10-000812 | ZTR height adjustment Grip |
| 13 | SP12-000812 | Rod kit, deck engagement, Z, Includes threaded rod end and cotter pin and spring |

54"ZB Chassis Diagram-Power Train Diagram



54ZB" Chassis Diagram -Power Train Diagram Key

| Item # | Gxi Part Number | Description |
|--------|-----------------|---|
| 1 | SP12-000210 | Fuel tank assembly, 54Z, 62Z, tethered fuel cap, fuel valve |
| 2 | SP11-000105 | Fuel system kit, Z, fuel supply line, fuel valve, filter, fuel tank breather line, and 6 hose clamps.. |
| 3 | SP12-000211 | Muffler, 54ZB, 36BB, 36FB, 54FB, 100TB, Subaru EH65V, 22hp, with hardware and gaskets |
| 4 | SP12-000212 | Hardware kit, engine mounting bolts, 54ZB Subaru EH65V Engine |
| 5 | M12-001685 | Pulley, engine, deck belt, 54Z, 1" bore with keyway, black, cast.. |
| 6 | M10-001215 | Pulley, engine, hydro input, 48Z, 54Z, 1" bore with keyway, cast aluminum |
| 7 | SP11-000107 | Hardware kit, engine pulley retaining hardware, Z, W, key, washers, lock washer, bolt |
| 8 | M10-000535 | fuel filter.. |
| 9 | SP11-000040 | Cable kit, park brake, Z, with springs, park pawl, S hook, and mounting bolts, for large OD output.. |
| 10 | M10-000469 | Belt, hydro input, Z, 8PK-1690 |
| 11 | SP12-000213 | Battery pan kit for 54Z, 62Z mower, includes tie down posts, strap, and hardware |
| 12 | SP11-000109 | Battery tie down kit, includes tie down posts, strap, and hardware.. |
| 13 | M10-001217 | Pulley, hydro, input, Z, integrated fan, Peerless spline, aluminum |
| 14 | SP11-000011 | Pulley kit, hydro, input idler, Z, includes pulley, carrier arm, bushing, and hardware..... |
| 15 | SP11-000110 | Pulley mount kit, hydro, input idler, Z, idle pulley carrier mount and hardware.. |
| 16 | SP11-000111 | Rod kit, hydro input tension, Z, includes threaded rod end and cotter pins.. |
| 17 | SP11-000112 | Hardware kit, Z, W, final drive input pulley hardware, includes washers, bolt, lockwasher, shims, use Loctite during assembly on bolt threads.. |
| 18 | SP11-000113 | Hardware kit, Z, hydro output belt tension hardware, includes M16 bolts, bolt locks, and bolt lock hardware |
| 19 | SP11-000114 | Hardware kit, Z, W, final drive mounting hardware to chassis.. |
| 20 | SP12-000214 | Hardware kit, 54Z, 62Z, W, lug nuts 1/2" x 20 thread, set of 4 |
| 21 | SP11-000005 | Tire assembly, 54Z, 62Z, RIGHT side rear tire mounted to rim, turf tread 22" x 10" x 10" tire.... |
| 22 | M10-000929 | Commercial Final Drive Assembly |
| 23 | SP11-000032 | Pulley, final drive, Z, splined bore, 8PK, aluminum |
| 24 | SP12-000151 | Pulley assembly, hydro output, Z, 8PK, contains 2 pulleys, keys, snap rings, washers |
| 25 | SP11-000116 | Hardware kit, Z, W, hydro to carrier mounting hardware, includes grade 10.9 hardware for front corner.. |
| 26 | SP11-000003 | Return to neutral assembly, Z, includes hardware |
| 27 | 2100-006D | Hydro, Peerless 2100-006D, integrated pump motor.. |
| 28 | 2100-007D | Hydro, Peerless 2100-007D, integrated pump motor.. |

54ZB" Chassis Diagram -Power Train Diagram Key

| Item # | Gxi Part Number | Description |
|--------|-----------------|--|
| 29 | SP12-000191 | Belt, final drive, Z, 8PK-644, set of 2 |
| 30 | M10-001409 | Fuel tank cap, for steel tank, plastic, with tether, sealed |
| 31 | SP12-000215 | Tire assembly, 54Z, 62Z, LEFT side rear tire mounted to rim, turf tread 22" x 10" x 10" tire.... |
| 32 | SP12-000216 | Hardware kit, lug stud, press fit, commercial Z, W, 1/2" x 20" thread, set of 4 |