

TURF BEAST SULKY

by **DEK**

Owner's Manual

This manual contains important safety instructions for the commercial grade sulky model: SK112

**READ SAFETY WARNINGS AND OPERATING INSTRUCTIONS CAREFULLY.
SAVE THIS MANUAL.**



Need Help?

Parts, Service
and Technical Assistance call:

1-919-550-3260

www.brushbeast.com

When you call the help-line you will need to have the following information:

Date of Purchase: _____

Location of Purchase: _____

Product life is extended with proper lubrication of hitch pivots, wheel pivots, and wheel bearings. To protect and prolong the life of your sulky, apply grease as part of routine maintenance.

TURFBEASTSULKY

Copyright© 2009 by GXi Outdoor Power, LLC. All rights reserved.

No part of this publication can be reproduced or distributed without prior written permission of GXi Outdoor Power, LLC Clayton, NC 27520 USA.

DEK® is registered trademark of GXi Outdoor Power, LLC

DEK® is exclusively distributed by GXi Outdoor Power, LLC

GXi Outdoor Power, LLC reserves the right to discontinue or change specifications or design at any time without notice and without incurring any obligation what so ever.

The information and specifications included in this publication were in effect at the time of approval for printing.



READ SAFETY WARNINGS AND OPERATING INSTRUCTIONS CAREFULLY
SAVE THESE INSTRUCTIONS.

This owner's manual is considered a permanent part of the sulky and should remain with the sulky if resold.

BEAST SERIES

Check out our other great products at www.HomeDepot.com
or visit our web site at www.brushbeast.com



TURF BEAST

36-inch Walk Behind Mower



TURF BEAST

54-inch Walk Behind Mower



THE BEAST

100-inch Tow Behind Mower



BRUSH BEAST

36-inch Brush Mower.



BRUSH MASTER

Chipper/Shredder
with 2-Way Feed

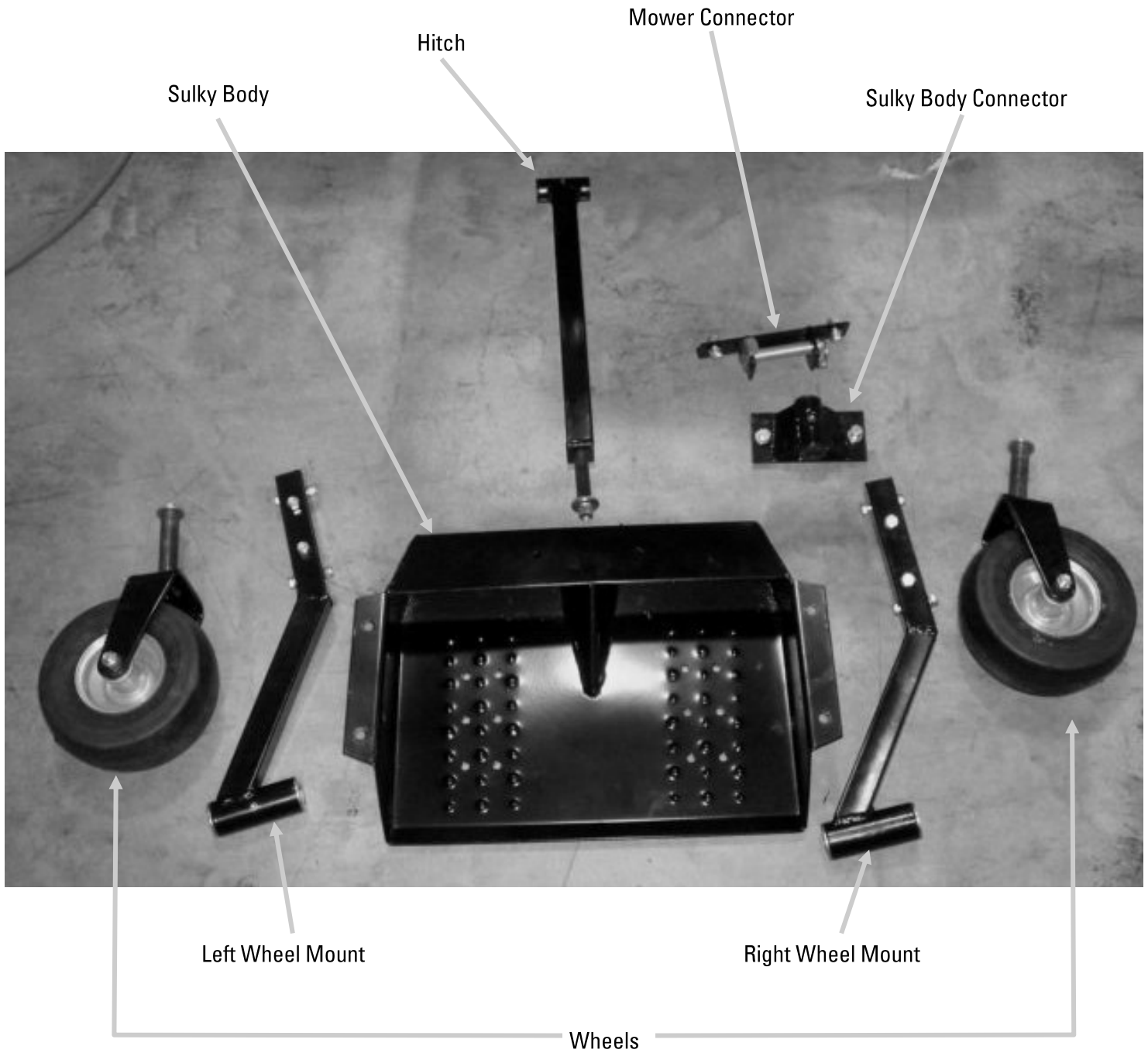
Equipment Operation—Safety Precautions

The use of the riding sulky, when attached to a walk behind mower, is only as safe as the operator. Carelessness or error on the part of the operator may result in serious bodily injury.

1. Practice operating the mower **without** the sulky attached until you are familiar with the controls and comfortable with the operation.
IMPORTANT: Observe all mower safety precautions when operating the mower with the sulky attached.
2. Make sure the sulky is properly attached to the mower and is in good working order prior to use.
3. Practice operating the mower with the sulky attached on open, level terrain with no obstacles. The sulky will affect the mower operation, especially when turning and stopping.
4. Slow down before making turns.
5. Use extra care when operating in reverse. Check carefully before backing up to be sure of a clear path.
6. There should be only **one** rider—the machine operator.
7. Do not allow untrained operators to use the sulky.
8. Use appropriate protective clothing such as boots, gloves, etc.
9. Never operate the sulky over curbs, rocks, roots or other obstructions that may make the sulky unstable.
10. Do **NOT** operate the sulky on steep slopes or rough terrain.
11. Beware of visible obstacles, e.g., buildings, fences, ditches, roads, etc.
12. Keep your feet on the foot rest at all times while operating the sulky.
13. Always keep both hands on the steering controls when using the mower with the sulky attached.
14. Never tow loads behind the sulky.
15. Before leaving the sulky/operator position, disengage the blade clutch, wait until all movement stops and set the park brake.
16. Do not modify the sulky.

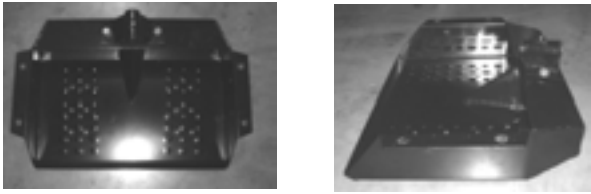
**DANGER!**

Use extreme caution while using a sulky. Clear area of people and debris before operating equipment and riding the sulky. Do NOT operate on steep slopes or rough terrain.



Step 1: Attach sulky body connector to sulky body

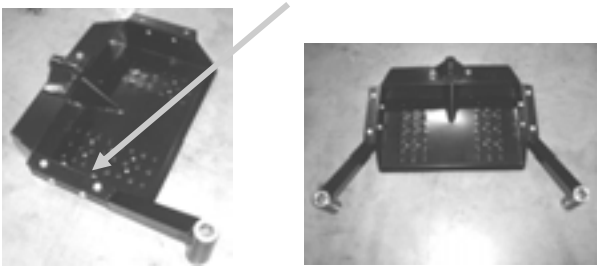
Use the supplied bolts to attach the sulky body connector to the sulky body. Torque bolts to 30 ft.lbs.



Note: When assembling the sulky body connector, make certain to orient the connector so the large hole with bushings is parallel with the bottom of the sulky.

Step 2: Attach wheel mounts to sulky body

Use the supplied bolts and nyloc locking nuts to attach the wheel mount to the sulky body (4 bolts per wheel mount). Tighten the bolts so the end of the bolt is flush (even) with the outside surface of the nyloc locking nut.



Note: Over-tightening the bolts can cause damage to the wheel mount tubing.

Step 3: Attach wheels to wheel mounts

A. Remove bolts, locking washers, and flat washers from wheel pivot studs.



B. Install wheel in wheel mounts by sliding up through the bushings. Apply grease liberally during assembly.

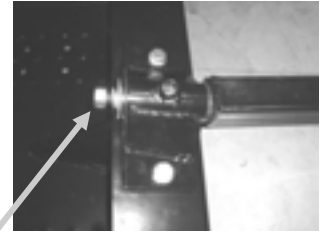


C. Complete the wheel assembly by reinstalling the flat washer, locking washer, and bolt. Torque the bolts to 30 ft.lbs.

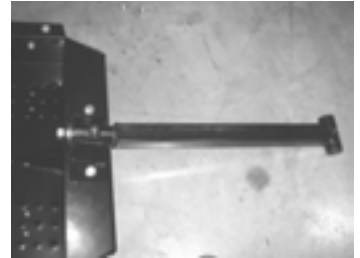
Note: Make certain the wheels can rotate/swivel 360 degrees freely.

Step 4: Attach hitch to sulky body connector

A. Insert the threaded shaft end of the hitch into the sulky body connector. Apply grease during this process.



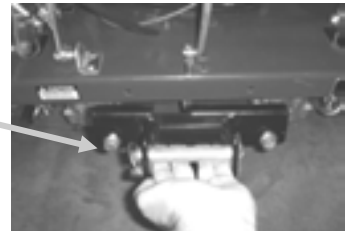
B. Tighten locking nut. Torque to 35 ft.lbs.



Note: Make certain the hitch connection can pivot 360 degrees prior to attaching the sulky to a mower.

Step 5: Attach mower connector to mower

Attach the mower connector onto the back of the walk behind mower using two (2) of the supplied nuts and bolts.



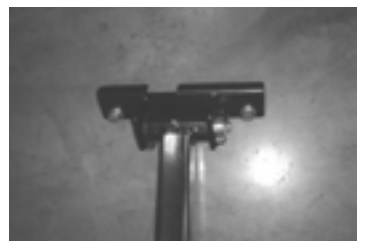
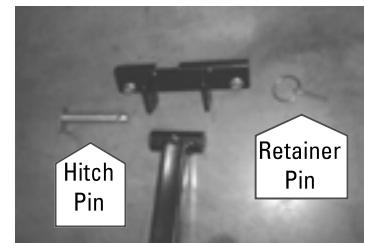
Note: If the mower is from another manufacturer, it may be necessary to drill mounting holes into the lawn mower or into the mower connector for a proper fit.

Step 6: Attach sulky to mower

A. Align the mower connector holes with the end of the hitch with bushings.

B. Insert hitch pin. Apply grease to the connection during assembly.

C. Install the retaining pin in the end of the hitch pin to secure the sulky to the mower connector.



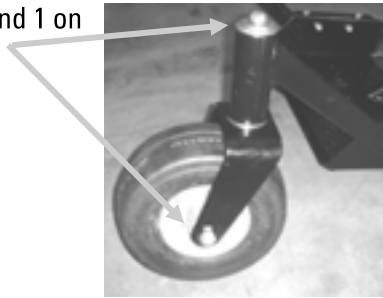
Lubrication Point Locations

The TURF BEAST SULKY has 6 lubrication points.

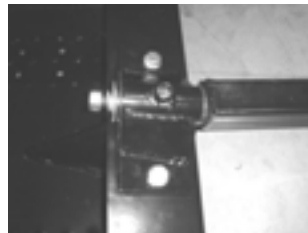
IMPORTANT: Be sure to lubricate the TURF BEAST SULKY before the first use.

Lubricate daily

1. Wheels (4 locations, 1 on each wheel shaft and 1 on each wheel axle)



2. Sulky body to Hitch Connection



3. Hitch to Mower Connection



To ensure proper lubrication of moving parts, GXi recommends that you lubricate the components with a high-quality, EP2 high-temperature-based grease or equivalent. GTR/OPE grease is the recommended lubricant.

The Importance of Maintenance

Maintenance is the responsibility of the owner and must be performed regularly to ensure your sulky continues to deliver safe and high-quality performance. Be sure to use genuine TURF BEAST SULKY replacement parts when servicing your sulky to assure the best quality, safety and performance.

Inspect the sulky on a daily basis for damage, loose connections and excessive wear. Make any necessary adjustments before operating the sulky.

Tire Pressure

Incorrect tire pressure may cause the sulky to pull to one side and/or become unstable. Check the tire pressure daily. NEVER exceed the recommended tire pressure.

Need Help?

Parts, Service
and Technical Assistance call:

1-919-550-3260

www.brushbeast.com

⚠ DANGER!

**Use extreme caution while using a sulky.
Clear area of people and debris before
operating equipment and riding the sulky.
Do NOT operate on steep slopes or rough
terrain.**

| Products Covered by this Warranty | Length of Warranty: *(from the date of original retail purchase) | | |
|-----------------------------------|--|------------|---------|
| | Noncommercial/ Nonrental | Commercial | Rental |
| Sulky Model SK112 | 12 months | 90 days | 90 days |

*LENGTH OF WARRANTY: Batteries supplied with applicable products as standard, original equipment are covered by this warranty for a period of 90 days from the date of original retail product purchase. Consumable parts such as bushings, tires and grease are not covered by this warranty.

To Qualify for this Warranty

The product must be purchased in the United States from a dealer authorized by GXi Outdoor Power, LLC to sell those products. This warranty applies to first retail purchaser/owner during the applicable warranty time period. NO WARRANTY REGISTRATION IS NECESSARY TO OBTAIN WARRANTY ON BEAST PRODUCTS. SAVE YOUR PROOF OF PURCHASE RECEIPT.

What GXi Outdoor Power Will Repair or Replace under Warranty

GXi will repair or replace, at its option, any part that is proven to be defective in material or workmanship under normal use during the applicable warranty time period subject to the exclusions stated herein. This warranty is void if the owner fails to follow the prescribed maintenance and operating procedures described in this manual. This specifically refers to ensuring routine lubrication is performed and the product is used in accordance with the operator’s instruction and mower manufacturer’s instructions.

GXi has the right to recover warranty administration costs from the owner if the root cause of the malfunction is found to be other than defective material or workmanship. In particular, this warranty does not cover: damage caused by not following the prescribed warnings and operating practices; failure to follow proper maintenance and storage procedures; and physical damage due to misuse, shipping, handling or storage.

Warranty repairs will be made without charge for parts and labor for the first year.

Anything replaced under warranty becomes the property of GXi. Parts replaced under warranty will be considered as part of the original product and any warranty on those parts will expire coincident with the original product warranty.

To Obtain Warranty Service

You must take the BEAST product, accessory, replacement part, apparel or the power equipment on which the accessory or replacement part is installed, and proof of purchase, at your expense, to any BEAST service location in the United States, who is authorized to service that product, during the service location’s normal business hours. If you are unable to obtain warranty service, or are dissatisfied with the warranty service you receive, take the following steps: First, contact the manager of the service center involved; normally this will resolve the problem. However, if you should require further assistance, write or call the GXi Parts and Service, LLC.

Exclusions

This warranty does not cover: normal wear, contaminants in the fuel or oil; damage as a result of use in an application for which the product was not designed; damage caused by incorporation or use of unsuitable attachments or parts, unauthorized alteration, or other misuse and neglect; damage caused by failure to follow the prescribed warnings, operating practices, proper maintenance and storage procedures; parts affected or damaged by accident and/or collision; damage due to shipping, handling, storage or any causes other than defects in material or workmanship of the product.

Disclaimer of Consequential Damage and Limitation of Implied Warranties

GXi disclaims any responsibility for loss of time or use of the product, transportation, commercial loss, or any other incidental or consequential damage. Any implied warranties are limited to the duration of this written limited warranty.

THIS WARRANTY IS VOID IF THE MANUFACTURING DATE AND THE SERIAL NUMBER ON THE EQUIPMENT HAS BEEN REMOVED OR THE EQUIPMENT HAS BEEN MODIFIED.